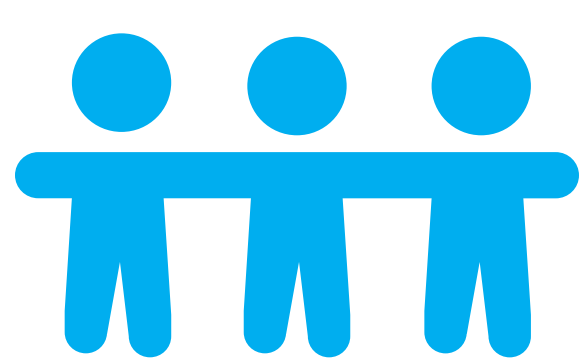




COULD YOU BE OUR NEXT BOARD MEMBER? BE A KEY PLAYER



INTEGRITY



COLLABORATIVE

KNOWLEDGE & EXPERIENCE :

- Housing Services
- Property Development
- Support Functions
- Digitalisation
- Innovation
- Culture Change



**STRATEGIC
THINKING**



**AN OPEN
MIND**



**ABILITY TO
CHALLENGE**



**SALARY: £1500 -
£4000 PER ANNUM**

**TIME COMMITMENT 6
TO 20 DAYS P.A**

**APPLICATIONS:
21/05/19**



01745 335348
recruitment@cartreficonwy.org
www.cartreficonwy.org



CUSTOMER
SERVICE
EXCELLENCE

RHAGORIAETH MEWN
GWASANAETH
I GWSMERIAID

